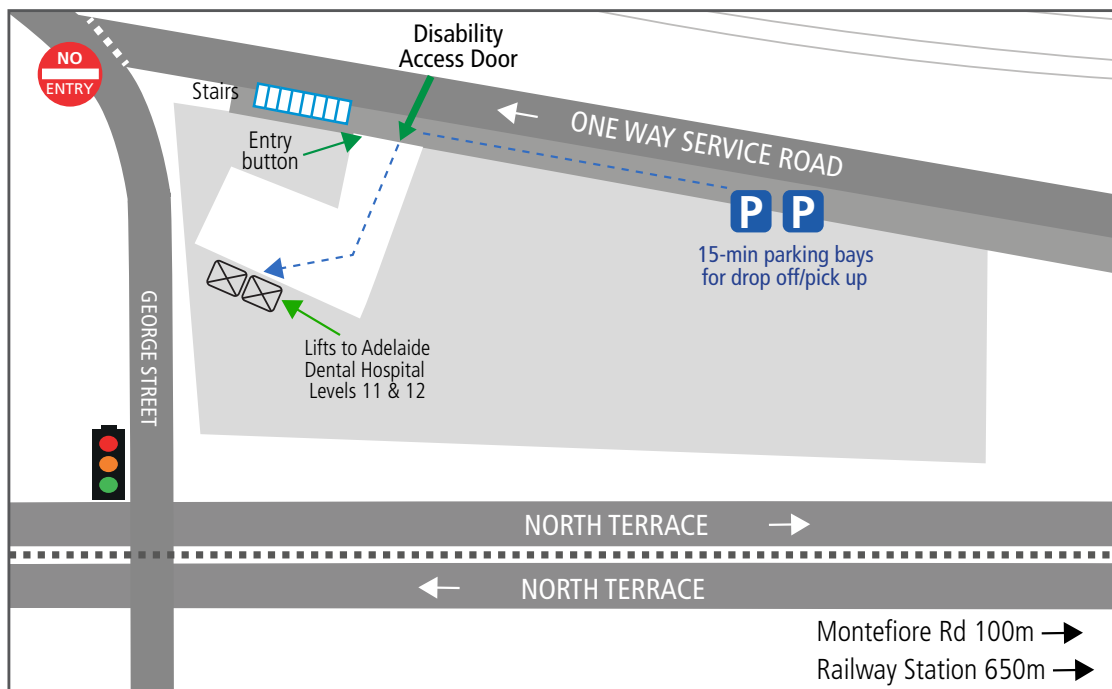
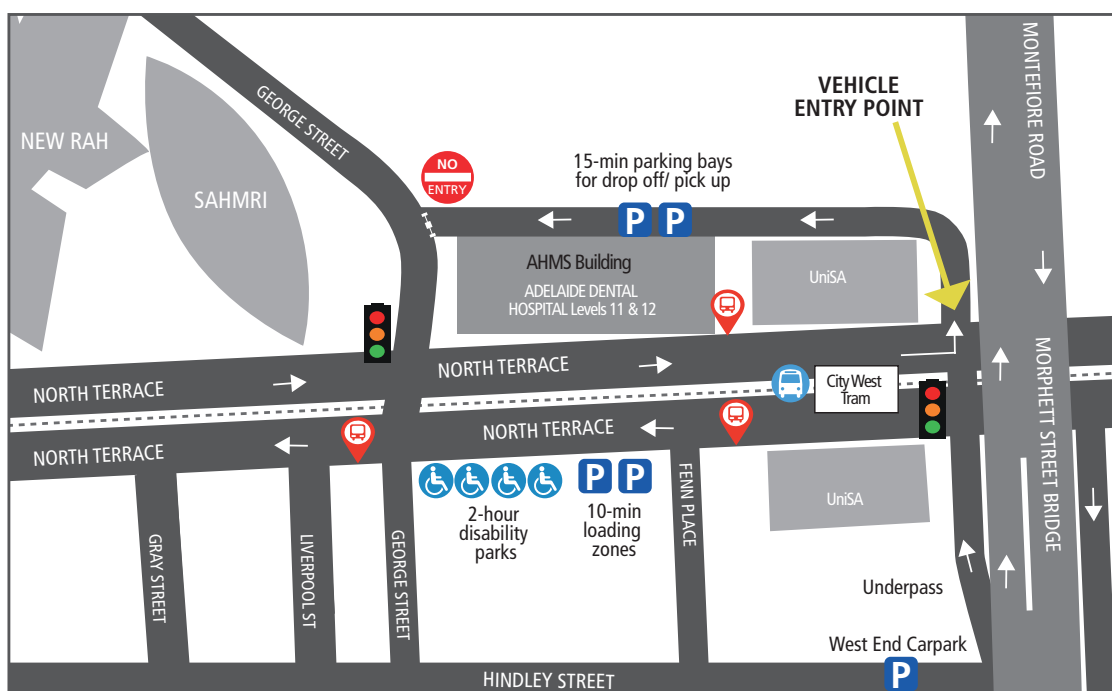


Access to Adelaide Dental Hospital



Lower Ground: Rear Access Only



Transport and Parking

# How to locate and get to the Adelaide Dental Hospital



## For more information

SA Dental Service contact details are listed in the White Pages Business and Government listing under SA Health. Contact your local clinic for appointments and treatment information.

### For general enquiries, contact:

SA Dental Service  
GPO Box 864 Adelaide SA 5001  
Telephone: 1300 008 222  
[www.sahealth.sa.gov.au/sadental](http://www.sahealth.sa.gov.au/sadental)

**Interpreters:** If you need an interpreter, call the clinic before your appointment so arrangements can be made. If you are deaf, or have a hearing or speech impairment, contact the National Relay Service. For more information visit: [www.relayservice.gov.au](http://www.relayservice.gov.au) or call 1800 555 660.



[www.ausgoal.gov.au/creative-commons](http://www.ausgoal.gov.au/creative-commons)

Stock #: 7216

Printed June 2020 - V1



SA Dental Service



Government  
of South Australia  
SA Health

You can get to the Adelaide Dental Hospital by Bus, Train or Tram. These are the lines and routes that have stops nearby.

### Bus Routes

Bus Stop C1 North Terrace - North Side  
Buses - 281, 281k, 286, 287, 288, INDB

Bus Stop X1 North Terrace - South Side  
Buses - 281, 281k, 286, 287, 288

Bus Stop Y1 North Terrace - South Side  
Buses - 281, 281k, 286, 287, 288

### Train

All train lines arriving at Adelaide Railway Station

### Tram

City West Tram